



The Abbey



Whole School Teacher of PE and Sport

This is a full time/part-time, maternity cover commencing September 2026 until August 2027.





The Abbey School has been a leader in girls' education for over 130 years. For all this time The Abbey has been a strong advocate for educating young women. We continue to encourage our students to achieve outstanding outcomes in whatever field of endeavour they choose.

Supporting them to make those critical decisions for themselves is a key part of our focus, ensuring that each student knows she is valued for herself. We offer a balanced mix of significant academic opportunity and pastoral support, with a wide range of options within, alongside and outside our exciting curriculum.

This is a full time/part-time, maternity cover commencing September 2026 until August 2027.

Introduction



The Abbey



<https://vimeo.com/1010491740>





Welcome from the Head

The Abbey is a remarkable all-girls community of learning and brilliant experiences. It is a place of curiosity, adventurous spirits, and the excitement of discovery. We focus on individual care and attention in a warmly supportive atmosphere, full of fun and laughter. Our students have the assurance to take risks, explore interests and passions, and engage generously with the world and with each other.

Our results are outstanding, but what matters to us is how students achieve them. Our goal is to equip girls to achieve academic excellence with confidence, purpose and joy. This means providing exceptional opportunities across the widest spectrum of learning and activities. We offer more student-led learning and choice in our curriculum than almost any other school, so that students take charge of their own futures and mature into the people they mean to be.

What's special about The Abbey is the atmosphere. We're a diverse, down-to-earth community full of enthusiasm, spark and energy. We have played a leading role in all-girls education for over 130 years. During that we've adapted and innovated and that is true now more than ever. In today's world, all-girls education matters: it helps our students face the future on their own terms, ready to make the world a better place for themselves and the communities around them.

I look forward to receiving your application to join The Abbey as a valued member of our community.

Dr Sarah Tullis





Welcome from the Head of The Abbey Junior School

The Abbey Junior School is a vibrant, nurturing community where girls are encouraged to be themselves, explore their passions and achieve extraordinary things every day.

From their very first steps with us in Little Knellies Nursery, our students benefit from exceptional teaching, excellent facilities, resources and a wide-ranging curriculum delivered by dedicated form teachers and specialists. Strong links with our Senior School create a seamless, stimulating learning journey that supports each girl's academic growth from the very beginning.

Our curriculum is rich, diverse, and designed to spark curiosity, creativity and a lifelong love of learning. Rooted in real-world experiences and hands-on discovery, it fosters confidence, independence and a deep sense of global awareness, preparing our girls to thrive in an ever-changing world.

Wellbeing is at the heart of all we do. We believe that children learn best when they feel happy, safe and valued. With small class sizes and a warm, inclusive atmosphere, each girl is known and supported as an individual. This personalised approach helps every child flourish academically, socially and emotionally.

Above all, we want our students to come to school each day with a sense of excitement.

We warmly invite you to come and visit and see for yourself what a special place The Abbey is.

Mrs Beccy Newton



Role Description

The Whole School Teacher of PE and Sport will be part of an enthusiastic and dedicated PE and Sport team who teach talented and motivated students in the Junior School and Senior School. They will be responsible for the delivery of an exciting and challenging PE and Sport curriculum that celebrates inclusion and diversity and enables all students to reach their full potential.

Key Responsibilities

- Experience of teaching PE and Sport across a number of age groups
- Promote the general progress of individual students and of any class or group of students assigned to them so that students may reach their full potential
- Lesson planning, evaluating and adjusting lessons/work plans/schemes of work as appropriate
- Provide objective and accurate feedback and reports as required on student achievement, progress and other matters, ensuring the availability of appropriate evidence.
- Participate in training and other learning activities as required
- To use teaching strategies that keeps students engaged through effective questioning, lively presentation and good use of resources
- Participate in arrangements for preparing students for examinations, invigilate the examinations and assess performance as required
- Assist at and attend official functions, including but not limited to INSET days, parents' evenings and open evenings as and when required
- Organising and leading on appropriate fixtures for any range of Sport.





Candidate Requirements

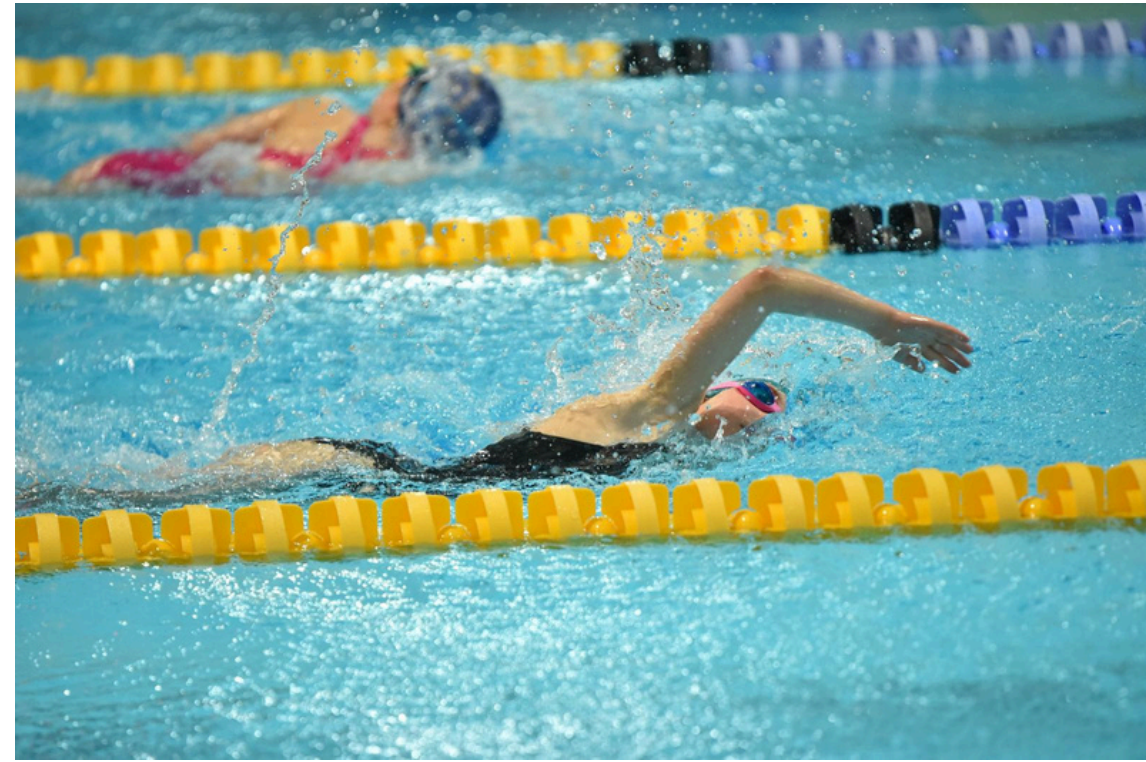
Person specification

- Excellent subject knowledge and experience of teaching, across a wide range of curriculum area
- Strong team player and ability to be flexible to meet the needs of the team
- Confident in using IT
- High level of professionalism and integrity
- Demonstrates high standards of personal and professional conduct
- Demonstrates empathy with students, parents and colleagues
- Committed to promoting the wellbeing of students
- Good organisational skills
- Strong timekeeping, can organise and prioritise work effectively under pressure ensuring deadlines are met
- Good verbal and written communication skills
- A demonstrable commitment to excellent customer care, with a focus on ensuring positive and professional experiences for families, external stakeholders and partners.
- Demonstrating and exemplifying the School's key purpose, to equip students to live with confidence, purpose and joy, and the School values of courage, honesty and kindness
- Exemplary pastoral and safeguarding practice

Qualifications

- Educated to a Bachelor's degree level (or international equivalent) at a minimum in the subject or closely related subject.
- A teaching qualification





Location, estates and facilities

The Abbey's town centre location places us at the heart of a thriving, busy and diverse community, whilst our extensive coach network helps us provide accessibility from locations across Oxfordshire and Berkshire for both Junior and Senior girls.

As one of the most vibrant towns in the UK, with a focus on technology and innovation industries, Reading offers wonderful opportunities, from the glories of the Chilterns and the Thames, and beautiful parks, to outstanding shopping and a constantly evolving cultural and restaurant scene.



Whilst we embrace the benefits of being a town centre school, with a solid urban vibe, we have excellent sporting facilities, with astros, tennis courts, netball courts, a large gymnasium, and an impressive fitness suite. These facilities are supplemented by partnerships with Reading University, Reading Rowing club at the Redgrave Pinsent rowing lake, and other excellent local facilities. We were delighted to host the national GSA event of Girls go Gold in September 2023.

Governors have made a substantial investment in the estate over the past few years. Our Junior School has been extended and remodelled, with imaginative new spaces to enable girls to go way beyond a conventional curriculum, the recent refurbishment of Knell House provides a welcoming and age-appropriate setting for Little Knellies nursery. The buildings sit in the Christchurch Conservation area, five minutes up the hill from the Senior School.

Our heated indoor pool, complete with diving boards, is in the heart of our Senior School building and all girls, including the very youngest, have timetabled swimming and other water activities.

All our classrooms are well equipped to support effective teaching and learning, including IT resources to support the school's one to one digital device policy.



Terms of appointment

An excellent remuneration package commensurate with the importance of the role and the experience of the successful candidate will be offered.

All eligible teaching staff will be automatically enrolled into the School's defined contribution pension scheme, Aviva APTIS. The School will contribute 15%; a % of this may be used as flexible pay as per the employee's instruction. Comprehensive life cover and ill health capacity insurance is also available to all teaching staff.

Appointment process and how to apply

Applicants should complete The Abbey's application form and provide a covering letter which fully addresses the competencies as described in the job description and person specification and outlines their interest in The Abbey.

The Abbey is committed to safeguarding and promoting the welfare of children. The successful candidate must be willing to undergo an enhanced disclosure through the Disclosure and Barring Service.

Protecting your personal data is of the utmost importance to The Abbey and we take this responsibility very seriously. The information that you provide on this form will be used to process your application for employment. The personal information that you provide will be stored and used in a confidential manner to assist our recruitment process. More details as to how we will process your data is set out in the Recruitment Privacy Notice and Data Protection policy.

If you succeed in your application and take up employment with The Abbey, the information will be used in the administration of your employment. We may check the information provided by you on this form with third parties.



Abbey Life & Benefits



The Abbey



3 Course Meal
Dining



Electric Vehicle
Leasing Scheme



Free Parking



Cycle to Work
Scheme



Sports Facilities



Employee Assistant
Programme (EAP)



Pension



Income Protection



Family Friendly
Policies



Concessions &
Discounts



Private
Healthcare
Scheme



Interest Free
Ticket Loan



Professional
Development



Staff Accommodation
(subject to availability)



IT equipment &
Resources



Key dates

