



---

RECRUITMENT PACK:  
**ASSISTANT HEAD (TEACHING & LEARNING)**

---

# ABOUT WITHINGTON GIRLS' SCHOOL

Withington is a leading independent day school for girls aged 7 to 19, achieving some of the best academic results in the country with dedication, compassion and joy.

We prioritise knowing each pupil as an individual, providing tailored care and support in a nurturing environment. Our pupils develop a love of learning, make exceptional academic progress, and grow into happy, confident and independent young women who feel genuinely valued throughout their journey with us. Withington is the North

## FINANCES

With an annual turnover of over £10M, Withington is in a healthy financial position and can look to the future with confidence. The Governors are keen to explore potential increases to commercial income, currently derived from facility lettings and holiday activities.

## SCHOOL GOVERNORS & WGS TRUST

Withington Girls' School is a company limited by guarantee and registered charity. The WGS Trust is a separate registered charity supporting the School's educational advancement, with Trustees appointed by the Governors. The Trust aims to support the provision of outstanding educational opportunities for talented girls, irrespective of financial background. Our supportive governing body play a crucial role in the framework of school, ensuring the school's strategy, vision and ethos align with educational standards and the needs of our whole community.

## BURSARY PROGRAMME

We don't want financial circumstances to be a barrier preventing girls who have demonstrated their potential to take up a place at our school. Our ambitious bursary programme is central to the ethos and values of the school and around 1 in 6 senior school pupils receive means tested financial support.

West's top performing independent school but, above all, Withington is a place where enthusiastic learners flourish, supported by staff who are deeply committed to pastoral care and personal development.

The most recent ISI report recognised our commitment to cultural understanding and respect as **"a significant strength of the school"**, highlighting the opportunities we provide for discussion and reflection across all faiths. **Read more here.**



*"A broad and enriching curriculum enables pupils to develop self-esteem, moral values, spiritual knowledge and an understanding and respect for one another."*

ISI Report 2025

# ABOUT WITHINGTON GIRLS' SCHOOL

True to our founding principles, we believe that the pleasure of learning brings its own reward, sustaining and enriching individuals throughout their lives. We aim to open as many doors as possible for our pupils in terms of learning. Respect for ourselves and others

## EQUALITY, DIVERSITY & INCLUSION

We're an inclusive school and our proactive approach to equality, diversity and inclusion reflects this culture. It enables everyone, whatever their background, to feel safe, respected and valued here, drawing on diverse voices and experiences that make us proud to be the best possible reflection of Greater Manchester's diversity. We never take these principles for granted, which is why we continue developing our strategy so that every girl feels welcome applying here.

alongside personal responsibility underpin our school community. We celebrate diversity, value teamwork, and encourage everyone to play their part, with older pupils and alumnae providing inspirational role models.

## PROUDLY ALL GIRLS

Throughout the school journey, a single-sex education empowers every girl to fulfil her full potential.

Without the subtle pressures of gender dynamics, our pupils feel genuinely free to explore every aspect of themselves - speaking up fearlessly, taking creative risks, and pursuing leadership without hesitation. Please don't just take our word for it, though: According to the latest data from the Department for Education, girls in girls' schools consistently outperform their peers in other schools academically. When they leave, our young women carry an unshakeable confidence that they belong anywhere, pursuing any ambition. We understand the challenges of modern life for young women today; our aim is to ensure that, academically and personally, our students are equipped and ready to take their place in the world with confidence.

Being proudly all girls means creating an environment where young women don't just succeed - they soar.



*"It's a school where it's cool to be good; they are challenged by each other. Instead of feeling threatened, they congratulate each other."*

The Good Schools Guide

# ETHOS, AIMS & VALUES

## OUR WITHINGTON ETHOS

**WELLBEING and INCLUSION**

All pupils are nurtured, supported and encouraged to reach their full potential, academically, socially and personally within our caring community

**RESPECT and RESPONSIBILITY**

The golden rule of respect for self, respect for others and personal responsibility underpins our school community and extends beyond the classroom into the wider world



**WHERE GIRLS SHINE**

**BEYOND the CLASSROOM**

Pupils develop talents, skills, interests and character through the wealth of extra-curricular opportunities on offer

**LOVE of LEARNING**

The pleasure of learning is its own reward; valuing and understanding how to learn sustains and enriches us throughout our lives

**COMMUNITY and DIVERSITY**

We are a community where diversity is celebrated, teamwork valued and every pupil is encouraged to play their part; older pupils and alumnae provide inspirational role models



withington  
GIRLS' SCHOOL EST 1890

WHERE GIRLS SHINE

## OUR WITHINGTON AIMS

- 1** 

**TO INSPIRE PUPILS WITH AN OUTSTANDING EDUCATION...**

...through a strong, regularly reviewed curriculum, evidence-based teaching strategies, and transformative technology, ensuring relevance, inclusivity, engagement, and enhanced pupil outcomes
- 2** 

**TO CULTIVATE PERSONAL DEVELOPMENT, WELLBEING AND A SENSE OF SAFETY...**

...by fostering an inclusive school environment, holistic pastoral care and enshrining strong values that shape the school's culture and community relationships
- 3** 

**TO CHAMPION OUR COMMUNITY...**

...by ensuring the quality, motivation, and wellbeing of its staff, fostering meaningful relationships with parents, alumnae, and local stakeholders, and strengthening the school's influence through robust community engagement
- 4** 

**TO EMPOWER FUTURE GENERATIONS...**

...by further securing long-term financial health, maintaining a strong and stable pupil body, developing additional income streams for the school, and implementing a well-defined marketing strategy to remain competitive and attractive to all



withington  
GIRLS' SCHOOL EST 1890

WHERE GIRLS SHINE

## OUR WITHINGTON VALUES

**RESPECT**

*FOR SELF*

---

**RESPECT**

*FOR OTHERS*

---


*PERSONAL*

**RESPONSIBILITY**

---

*LOVE OF*

**LEARNING**



withington  
GIRLS' SCHOOL EST 1890

WHERE GIRLS SHINE

# SCHOOL STRUCTURE

Withington offers pupils a continuous and supportive journey from Junior School through to the Sixth Form. At every stage, the school combines academic challenge with dedicated pastoral care and opportunities to develop confidence, curiosity and a strong sense of community.

## JUNIOR SCHOOL

Pupils begin their Withington journey in a welcoming environment that encourages confidence, curiosity and independence. Teachers get to know each pupil well personally and academically, whilst specialist teaching in subjects such as IT, Music and Languages, and well-used outdoor spaces, enrich learning. The House system, varied activities and wraparound care help build a strong sense of belonging and community, with Form Tutors providing consistent support and guidance. Outdoor play and learning form an important part of daily life.

## SENIOR SCHOOL

As pupils move into the Senior School, they enjoy a broad curriculum whilst having opportunities in sport, music, drama and a wide range of clubs. The House system, dedicated form time and assemblies create strong friendships and allow for personal growth, whilst trips, visiting speakers and enrichment activities broaden horizons. Academic challenge is balanced with strong pastoral support from Heads of Year and Form Tutors, and pupils are encouraged to discover and develop their talents both in and beyond the classroom within a caring environment that celebrates individual achievement.

## SIXTH FORM

In the Sixth Form, pupils join a close-knit community where they are encouraged to excel whilst taking on new challenges. Small classes, a wide choice of A Levels, the Extended Project Qualification and a varied enrichment programme prepare pupils for life beyond school. Sixth Formers take on leadership roles, support younger pupils and contribute to the wider life of the school, with many progressing to Russell Group universities and other competitive courses.



*“Withington’s motto is ‘Ad lucem’ (towards the light), a most fitting way of encapsulating the standard of education at this remarkable school. It’s an inspiring place where very able girls who thrive on being fully engaged in a broad and stimulating curriculum will shine brightly.”*

The Good Schools Guide

# ACADEMIC SUCCESS

A genuinely outstanding school isn't judged solely on its results and league tables.

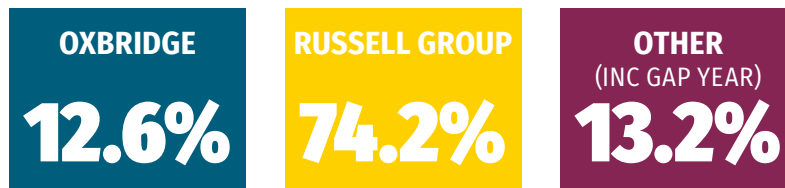
That's why a Withington education is about so much more than academic performance. However, we can't help but feel a deep pride in the remarkable results achieved by our students. They're a credit to our dedicated staff - and, most importantly, the results are a testament to our wonderful girls.

But please don't just take our word for it. We've been named **Independent School of the Year for Academic Performance in the North West** in the prestigious Sunday Times Parent Power Schools Guide 2026. It's our seventh consecutive year of receiving awards from The Sunday Times, including being named as **North West Independent Secondary School of the Decade in 2021**.

## AMBITIOUS ATTITUDE

When our girls leave us to continue their educational journey, we're delighted to see that 80% of leavers gain places on their preferred degree courses at their chosen universities. We're proud of each and every student. The breadth of subjects our students progress to study reflects the wide range of opportunities they experience here at Withington.

### IN THE LAST FIVE YEARS:



### IN 2025:



*"We were bowled over by the girls. Every single one was confident, but not arrogant. In discussion with us they were respectful of their peers and made some extremely mature and insightful comments, often well beyond their years."*

The Good Schools Guide

# CURRICULUM

Withington Girls' School offers an exceptional, carefully structured curriculum that supports pupils at every stage, from Junior School through to Sixth Form, combining academic rigour with creativity, curiosity and personal development.

## JUNIOR SCHOOL

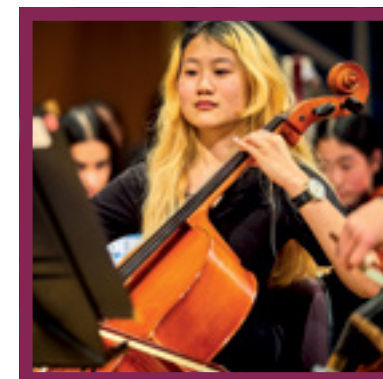
The Junior School Curriculum is based on the National Curriculum but extends beyond it to provide a broad, enriched educational experience that fosters curiosity and a love of learning. Pupils study a wide range of subjects alongside enhanced opportunities in physical education, music, languages, and creative thinking, with five PE lessons and two music lessons each week and a different language introduced in each year group. The curriculum places strong emphasis on personal development through PSHCE, encourages exploration of big ideas through dedicated thinking lessons, and is enriched by trips, outdoor learning, and close links with the Senior School, allowing access to specialist facilities and teaching.

## SENIOR SCHOOL

The Senior School Curriculum provides a balanced and inspiring academic programme designed to help pupils discover their strengths and interests while building on elements of the National Curriculum that best support their learning. Pupils in Years 7-9 study a wide range of subjects including English, maths, sciences, languages, humanities, arts, design and technology, and physical education, with some lessons taught in smaller groups to enhance learning. At GCSE, core subjects such as English Language, English Literature, mathematics and science are complemented by optional courses including modern languages, arts, computer science and more, and all pupils also have timetabled PSHCE and PE. Technology is integrated purposely across the curriculum, with students using their own devices for learning and homework. As pupils progress, the curriculum becomes more specialised, preparing them for future study and careers through a combination of academic rigour and broader personal development.

## SIXTH FORM

The Sixth Form Curriculum allows students aged 16-19 to specialise in subjects they are most passionate about by choosing to study three or four A Levels from a broad list that includes sciences, languages, humanities, arts, maths and more. Students are encouraged to take the Extended Project Qualification (EPQ) alongside their A Levels to pursue independent research in an area of personal interest, and there are extension sessions for those applying to highly competitive university courses or wanting to go beyond standard A Level content. Learning is enriched by trips, conferences and extra-curricular opportunities.



## CO-CURRICULAR

Our broad curricular and co-curricular programmes support pupils in developing confidence, creativity, and a lifelong love of active engagement, whether through sport, music, drama, or a wide range of other opportunities, while fostering an understanding that a balanced, healthy lifestyle underpins wellbeing in all its forms.

We believe that co-curricular activities are key to a full and rounded education, contribute to physical and mental wellbeing and help our pupils to develop confidence and skills in creativity, communication, time management, leadership, critical thinking and resilience.

An extraordinary array of clubs and societies means there is something for everyone, from coding to garage band, photography to sign language and much more in between.

Enquiring minds can dig deeper into a subject that ignites their interest and engages them beyond the curriculum through our clubs. And of course, there is the opportunity to take the lead by joining a committee, running activities for younger pupils or by starting a new club or society.

Clubs meet at lunch time or after school and many of the school buses provide a late service to make taking part easy.



## COMMUNITY & PARTNERSHIPS

As a forward-thinking, outward-looking school, our ethos of respect for self, respect for others and personal responsibility underpins our connections beyond the school gates.

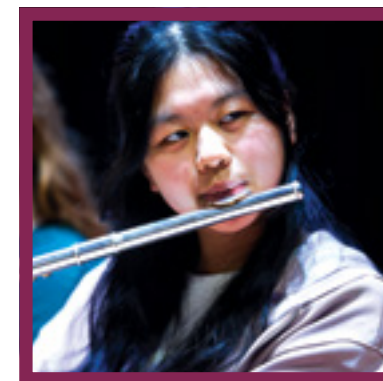
We have a strong track record of delivering sustained, mutually beneficial partnerships with state schools and community organisations that benefit local, national and international communities. Hundreds of pupils each year benefit from enterprising, fun and engaging activities that develop their skills and knowledge while forging new experiences and friendships.

Locally, our partnerships create meaningful impact across Manchester and beyond. One of our longest running programmes, SHiNE Together, provides Saturday morning classes for boys and girls in Years 5 and 6 in an exciting range of subjects. Our musical partnership, Manchester Sings, brings together hundreds of children from our region to celebrate music and recognise the power of community. Meanwhile, our Science Communicators - Sixth Form scientists who deliver exciting

science shows and activities to primary and secondary school partners - inspire younger audiences while developing valuable communication and personal skills alongside their subject knowledge.

Looking ahead, Future Focus represents our commitment to empowering the next generation of young women. This series of conferences aims to inspire confidence, develop self-esteem and improve mental health - equipping participants with essential skills to succeed and flourish in their future lives and careers.

Our reach extends far beyond the UK through our transformative Gambia programme, which has developed over the last 20 years to advance educational opportunities in remote rural locations. We have established a strong partnership with the Mama Tamba Nursery School in Illiasa, a small village in inland Gambia, where we are guided by local contacts who work with village elders to assess needs and advise how we can best support the community.



*“Leaders provide a warm, caring and supportive environment. The school has a clear sense of community.”*

ISI Report 2025

# PASTORAL SUPPORT & WELLBEING

At Withington Girls' School, we believe that exceptional education flourishes when both students and staff feel genuinely supported and valued.

## PUPIL WELLBEING

By knowing and understanding each pupil as an individual, we can nurture her potential within our exceptionally warm, friendly and caring environment. Withington girls achieve outstanding academic success alongside vital personal and social development.

We work closely with families throughout each girl's time at Withington, helping us identify anything that might impact her personal development so we can offer relevant support at every stage. Through our proactive Personal, Social, Health & Citizenship Education (PSHCE) programme, pupils learn about themselves and the wider world. Our specialist team, including Form Tutors, Heads of Year and health professionals, works together to ensure their wellbeing.

## STAFF WELLBEING

We recognise that outstanding teaching comes from staff who feel valued and well-cared for. Our comprehensive wellbeing package includes highly attractive remuneration and pension schemes, healthcare through Simply Health, death in service benefit, and complimentary school lunches. Staff benefit from our fitness suite and classes, on-site parking, EV car charging, library access, and additional PPA time for teaching staff.

This approach to staff wellbeing contributes to our notably stable and happy staff community - colleagues who are genuinely invested in the school's mission and enjoy long, fulfilling careers here. It's this stability that helps create the supportive environment in which our pupils flourish.

## NATIONAL WELLBEING AWARD

Withington Girls' School has received the national **Wellbeing Award for Schools**, recognising its strong commitment to pupil and staff wellbeing. The accreditation followed a thorough assessment of the school's pastoral care, inclusive culture and embedded wellbeing practices, with pupils and parents highlighting accessible support and a positive community that underpins both personal development and academic success.



*"Pupils reported that if they have any concerns, they are able to access the pastoral team easily, and staff consistently make time to speak with them when needed. They described staff as welcoming and approachable, stating that they never feel unable to speak to someone. They expressed that they never feel "lost in the crowd" and that their individual needs are recognised."*

Wellbeing Award for Schools Report

# OUR LOCATION

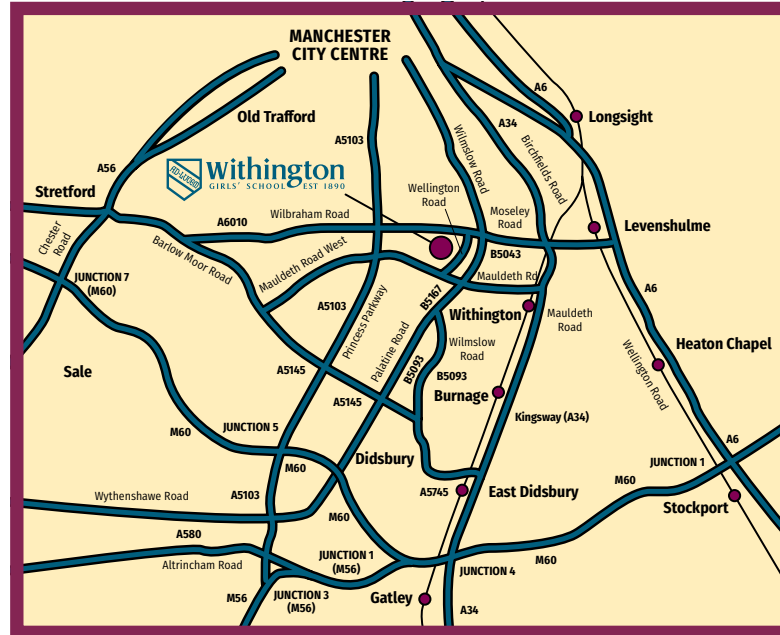
Withington Girls' School is ideally situated in Greater Manchester, one of the UK's most dynamic and culturally rich regions. The school benefits from excellent transport connectivity, with Manchester's direct rail links to London, Birmingham, Bristol, Leeds, and York. Manchester Airport is conveniently nearby, and the school's proximity to the M6 and M62 motorways allows for good road connections.

The school sits within reach of some of Greater Manchester's most sought-after residential areas, including Didsbury, Cheadle, and Altrincham - leafy suburbs that offer the best of both worlds: metropolitan amenities alongside green spaces and a strong community feel.

Manchester's cultural landscape is particularly compelling, with the city attracting world-renowned artists and hosting internationally acclaimed festivals such as the Manchester International Festival. The region is home to leading universities, including The University of Manchester, recognised as a centre of teaching excellence and world-class research.

For those who appreciate the outdoors, the location offers excellent access to the Peak District and Lake District, both within easy reach.

As the birthplace of the industrial revolution, Manchester has always been a place where things happen. Today, that energy translates into a forward-thinking region that provides an exciting backdrop for anyone working and living in the area.



# JOB DESCRIPTION

The School is committed to safeguarding and promoting the welfare of children and young people and expects all staff and volunteers to share this commitment.

**JOB TITLE:** Assistant Head (Teaching and Learning)

**REPORTING TO:** Deputy Head Academic

**ROLE OVERVIEW:** The Assistant Head (Teaching and Learning) will be a member of the Senior Leadership Team and will play a key role in shaping the strategic direction of the school, promoting its ethos and values, and sustaining its reputation for academic excellence and innovation in teaching and learning.

The postholder will work closely with the Deputy Head Academic and colleagues across the school to lead the continued development of teaching and learning, professional growth, and evidence-informed practice. They will teach and cover lessons as appropriate, following a timetable commensurate with the responsibilities of the role.

**PURPOSE OF THE ROLE:**

The Assistant Head (Teaching and Learning) will support the Deputy Head Academic in leading, developing and evaluating teaching and learning across Withington Girls' School.

The postholder will play a central role in promoting excellent classroom practice, fostering a culture of professional reflection and development, and supporting colleagues at all stages of their careers. The role will include leadership of key areas such as whole-school teaching and learning, staff professional development, Professional Review, ECT and PGCE mentoring, and the thoughtful use of research and innovation, including AI, to enhance teaching and learning.

This job description is written at a specific time and is subject to change as the demands of the School and the role develop. The role requires flexibility and adaptability, and employees of the School should be aware that they may be asked to perform tasks and be given responsibilities not detailed in this job description.

**CHILD PROTECTION & SAFEGUARDING:**

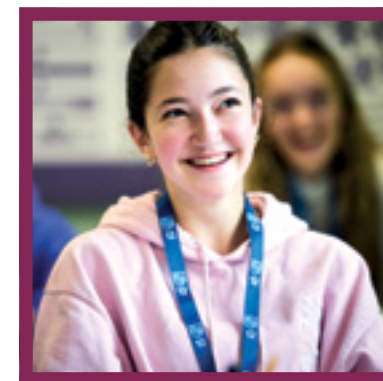
Withington Girls' School is committed to safeguarding and promoting the welfare of children and young people and expects all staff and volunteers to share this commitment. The successful candidate must be willing to undergo child protection screening appropriate to the post, including checks with past employers and the Disclosure and Barring Service.

It is the post holder's responsibility to promote and safeguard the welfare of children. You will comply with the Withington Girls' School Child Protection and Safeguarding Policy, and the requirement to report to the Designated Safeguarding Lead any concerns relating to the safety or welfare of children.

**BENEFITS:**

In addition to providing a warm and inclusive working environment, Withington Girls' School also offers a comprehensive package to its teaching staff. This package includes:

- A competitive salary based on the Withington Girls' School Pay Scale
- A choice of remaining within the Teachers' Pension Scheme or taking a Defined Contribution Scheme
- Free School Lunches
- 20% PPA time
- Small examination class sizes
- Fully Funded Healthcare Plan through Simply Health
- Following induction, free use of the fitness suite



# JOB DESCRIPTION

The School is committed to safeguarding and promoting the welfare of children and young people and expects all staff and volunteers to share this commitment.

## MAIN DUTIES & RESPONSIBILITIES:

As Assistant Head (Teaching and Learning) at Withington Girls' School:

### Leadership

- To serve as a member of the Senior Leadership Team, attending and contributing to SLT meetings
- As a member of the Senior Leadership Team, to contribute to the effective delivery of the School Development Plan and all School policies, ensuring the smooth running of all areas of the School
- To share responsibility for regulatory compliance and the School's preparedness for inspection
- To undertake departmental quality assurance, including lesson observations, professional review, and work scrutiny, in conjunction with the Deputy Head Academic
- To oversee and develop the Professional Review programme and, in conjunction with the Deputy Head Academic, ensure that all members of the teaching staff undertake appropriate and purposeful CPD
- To be involved with staff disciplinary and capability procedures where necessary
- To participate in the recruitment process and the appointment of new teaching staff, assisting with the selection and interviewing of candidates
- To share responsibility with the SLT for leading and presenting whole-school assemblies, maintaining a presence at school-related events, and liaising with external bodies
- To undertake emergency contact responsibility for school trips and for the school during holiday periods
- To support the school's ethos and be an outstanding ambassador for Withington Girls' School

### Teaching and Learning

To work with the Deputy Head Academic to:

- Lead and promote the continued development of excellent teaching and learning across the school
- Contribute to the development, articulation and implementation of a clear vision for high-quality teaching and learning, rooted in the school's aims and values
- Review pedagogy and the effectiveness of teaching and learning throughout the school
- Contribute to the development of teaching and learning resources and promote the sharing of best practice through regular contributions to Heads of Department meetings, CPD days, and other teaching and learning forums
- Support and help lead the development of a coherent and ambitious staff CPD programme, with opportunities for collaborative and collegiate professional learning
- Foster a culture of reflective practice, professional dialogue and continuous improvement amongst teaching staff
- Support colleagues at all stages of their careers through coaching, mentoring and professional guidance



# JOB DESCRIPTION

The School is committed to safeguarding and promoting the welfare of children and young people and expects all staff and volunteers to share this commitment.

## MAIN DUTIES & RESPONSIBILITIES:

- Lead the induction and development of Early Career Teachers at Withington and oversee the school's PGCE mentoring provision
- Lead a full programme of Regional Meetings for ECTs across the North West in partnership with ISTIP
- Work with parents and pupils to develop and nurture effective study skills and learning habits
- Support the provision of research, scholarship and extension opportunities across the curriculum
- Promote the thoughtful use of educational research and evidence-informed practice to enhance teaching and learning
- Support the school's strategic approach to innovation in teaching and learning, including the effective, ethical and thoughtful use of AI in teaching and professional practice
- Act as the SLT lead for the new starter induction process, managing the programme of new starter events and leading the New Staff Induction Day and the September CPD day for new staff. Assist the HR Department in the ongoing development of the programme

### External

- To assist the Deputy Heads and other senior colleagues at school events such as open mornings and other key admissions or recruitment events
- To support the school's admissions process through involvement in interviews for prospective pupils and engagement with prospective families where appropriate
- To act as an ambassador for the School in external forums, building and maintaining positive relationships with partner schools, universities and other organisations that enhance academic provision and enrichment opportunities for pupils
- To contribute to the wider life of the School community through a visible presence at key events, the cultivation of positive relationships with staff, parents and alumnae, and the promotion of the School's ethos and culture in all external engagement

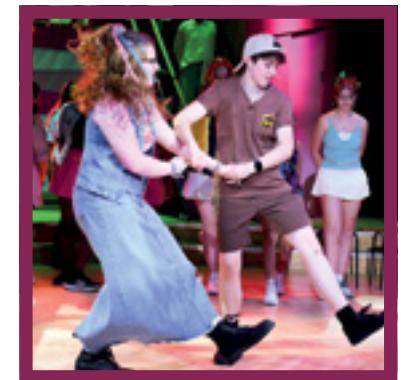
As a member of staff at Withington you are expected:

- To maintain good order among the pupils and safeguard their health, safety and welfare in accordance with school policy, both on the school premises and on school activities elsewhere
- To become familiar with, and follow, all school policies
- To ensure awareness of what is happening in and around the school; checking and responding, where necessary, to school emails at least once every school day
- To develop self through CPD and improve IT skills, attending IT training courses in order to maximise effective use of all school systems
- To undertake any other duties that might be reasonably requested by the Head and Deputy Head Academic



# PERSON SPECIFICATION

	ESSENTIAL	DESIRABLE	METHOD OF ASSESSMENT
QUALIFICATIONS	<ul style="list-style-type: none"> <li>• A good honours degree in an appropriate subject</li> <li>• PGCE (Secondary) or equivalent teaching qualification</li> <li>• Evidence of continuing professional development</li> </ul>	<ul style="list-style-type: none"> <li>• A Masters in Educational Leadership or Senior Leadership Qualification</li> <li>• A higher degree or other professional qualification</li> </ul>	<ul style="list-style-type: none"> <li>• Contents of application form</li> <li>• Production of the Applicant's original certificates</li> </ul>
EXPERIENCE	<ul style="list-style-type: none"> <li>• Significant teaching experience in a senior school setting</li> <li>• Experience of middle leadership, or of making a wider contribution to teaching and learning beyond one's own classroom</li> <li>• Experience of leading or contributing to departmental or whole-school development in teaching and learning</li> <li>• Experience of supporting, coaching or mentoring colleagues</li> </ul>	<ul style="list-style-type: none"> <li>• Experience of contributing to staff professional development</li> <li>• Experience of involvement in ECT induction, PGCE mentoring or other teacher development programmes</li> </ul>	<ul style="list-style-type: none"> <li>• Contents of application form</li> <li>• Interview</li> <li>• Professional references</li> </ul>
SKILLS & KNOWLEDGE	<ul style="list-style-type: none"> <li>• A strong understanding of excellent teaching and learning, and the factors which support high-quality classroom practice</li> <li>• A clear understanding of safeguarding and child protection procedures and the welfare of children</li> <li>• The ability to think strategically and contribute to the development of teaching and learning</li> <li>• Excellent interpersonal, oral and written communication skills</li> <li>• Strong ICT skills and a willingness to embrace new technologies</li> </ul>	<ul style="list-style-type: none"> <li>• Knowledge of current educational research and evidence-informed practice</li> <li>• An understanding of the effective, ethical and thoughtful use of AI in teaching and learning</li> <li>• Experience and/or awareness of the particular requirements of teaching in a single-sex girls' school</li> </ul>	<ul style="list-style-type: none"> <li>• Contents of application form</li> <li>• Interview</li> <li>• Professional References</li> </ul>



# PERSON SPECIFICATION

PERSONAL COMPETENCIES & QUALITIES	ESSENTIAL	DESIRABLE	METHOD OF ASSESSMENT
	<ul style="list-style-type: none"> <li>Professionalism and the ability to act as an outstanding role model for young people and colleagues</li> <li>A passion for helping children and young people learn, and for supporting colleagues in their professional growth</li> <li>The ability to form and maintain positive and appropriate relationships and personal boundaries with children and young people</li> <li>Trustworthiness, integrity, tact and diplomacy in dealing with others</li> <li>A commitment to ongoing professional development, diversity and inclusion, and the values and ethos of Withington Girls' School</li> </ul>	<ul style="list-style-type: none"> <li>A warm, friendly and patient manner</li> <li>A sense of humour</li> </ul>	<ul style="list-style-type: none"> <li>Contents of application form</li> <li>Interview</li> <li>Professional references</li> </ul>



## THE SUNDAY TIMES SCHOOLS GUIDE

In December 2025, Withington was named Northwest Independent School of the Year for Academic Excellence. This marked the seventh consecutive year the school has received an award from The Sunday Times, including being named as North West Independent Secondary School of the Decade in the 2021 edition of the Schools Guide.

## GOOD SCHOOLS GUIDE REVIEWS

### Junior School - Last word

*"Withington Girls' Junior School ticks an awful lot of boxes. Pupils have to be bright and able to work at a fast pace, but if this is your daughter then the teaching, environment, extracurricular opportunities and sheer exuberance and chutzpah of this place will open doors and opportunities. What's not to like?"*

### Senior School - Last word

*"Withington's motto is 'Ad lucem' (towards the light), a most fitting way of encapsulating the standard of education at this remarkable school. It's an inspiring place where very able girls who thrive on being fully engaged in a broad and stimulating curriculum will shine brightly."*

## TATLER SCHOOLS GUIDE 2026

*"Withington is an undeniably academic establishment: its most recent results saw more than 40 per cent of A-levels graded A\*, and 55 per cent of GCSEs scoring coveted nines. But if the school encourages students to succeed, it isn't afraid of letting them fail so long as they've had a go.*

*And have a go they do: netball and lacrosse are strong and competitive; there are opportunities to practise yoga and dance; and the thriving and eclectic array of clubs, which includes Model United Nations, basketball and an electric harp ensemble, is much-loved by the children, with one saying: 'The number of extracurriculars is massive. I'm constantly wondering what else I can do - although with everything available, I'm never stumped.'"*

## WELLBEING AWARD FOR SCHOOLS

Withington has earned the Wellbeing Award for Schools (WAS), a national accreditation that recognises our school's commitment to supporting the wellbeing of pupils and staff. The report indicates that Withington demonstrates a mature, embedded and evolving wellbeing culture.

Pupils reported that if they have any concerns, they are able to access the pastoral team easily, and staff consistently make time to speak with them when needed. They described staff as welcoming and approachable, stating that they never feel unable to speak to someone.

Parents shared that they continue to be positively surprised by the breadth and quality of support offered. Although the school is widely recognised for its academic success, they highlighted that it also actively celebrates culture and fosters a strong sense of community.

Staff reported that wellbeing is embedded throughout the entire employee lifecycle. New staff receive a thorough induction that covers all relevant aspects of school life, and additional lunchtime sessions are available during their first term to support transition and integration.



Leading Independent Schools



gsa Girls' Schools Association Since 1874



Withington Girls' School, Wellington Road, Fallowfield, Manchester M14 6BL  
Tel: 0161 224 1077 Email: office@wgs.org Registered Charity No. 1158226

wgs.org